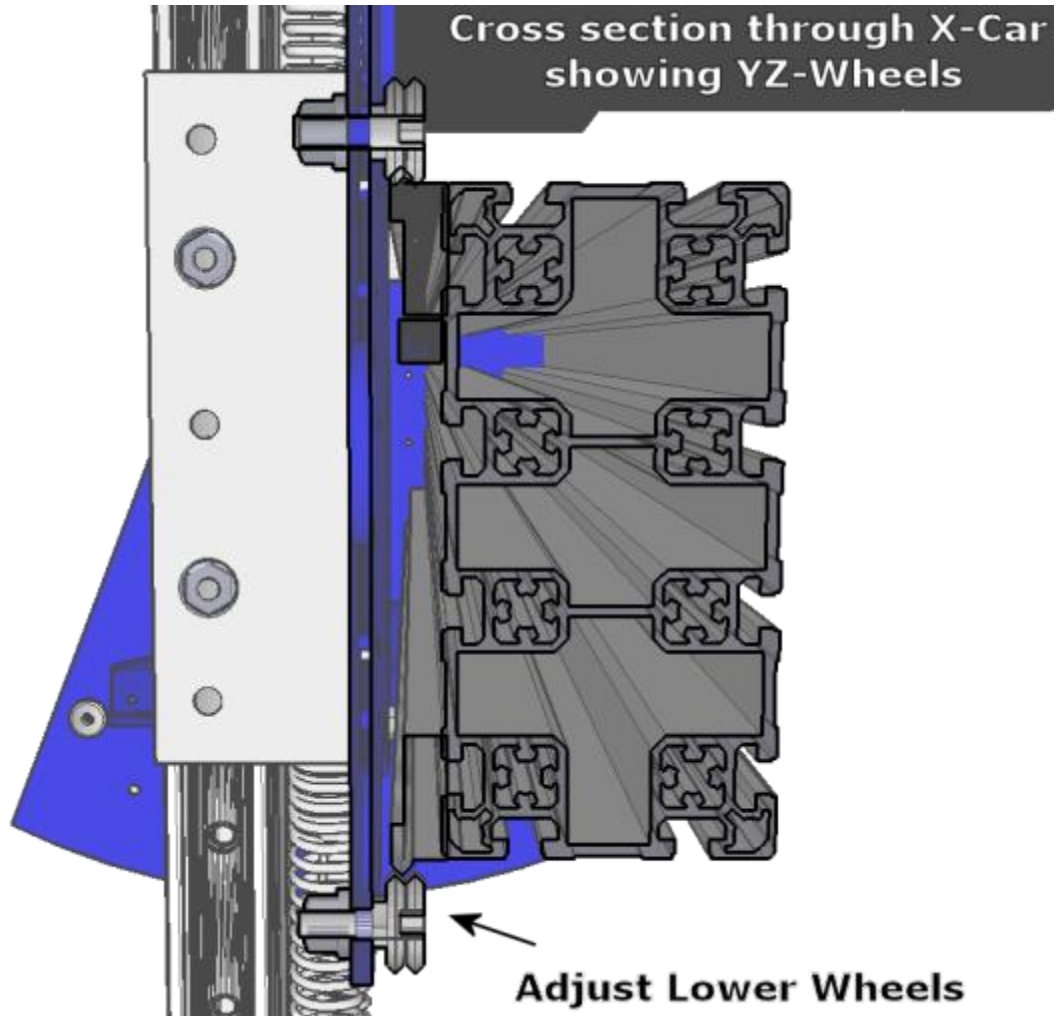
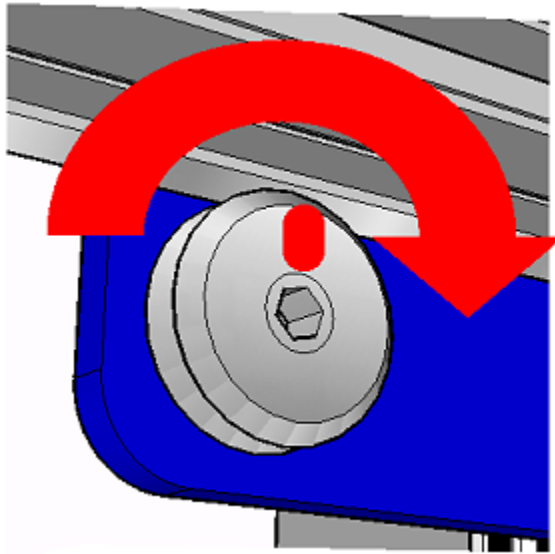


ShopBot®

Production Support

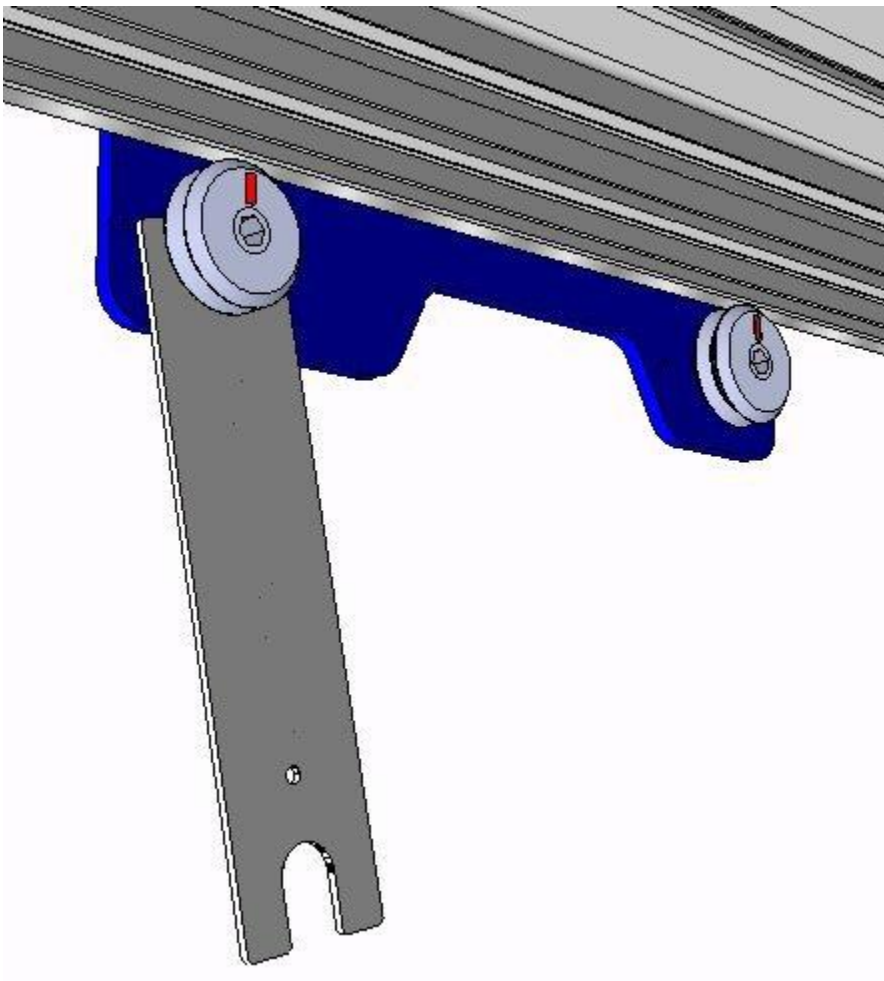
Adjusting the Lower Wheels on the YZ-Car



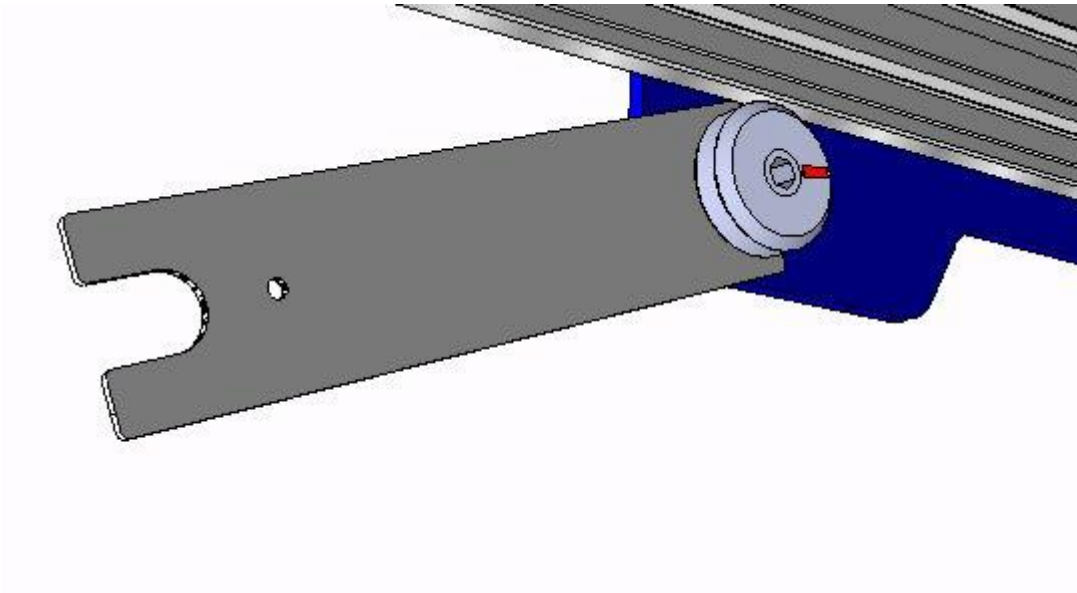


Turn Clockwise to Adjust

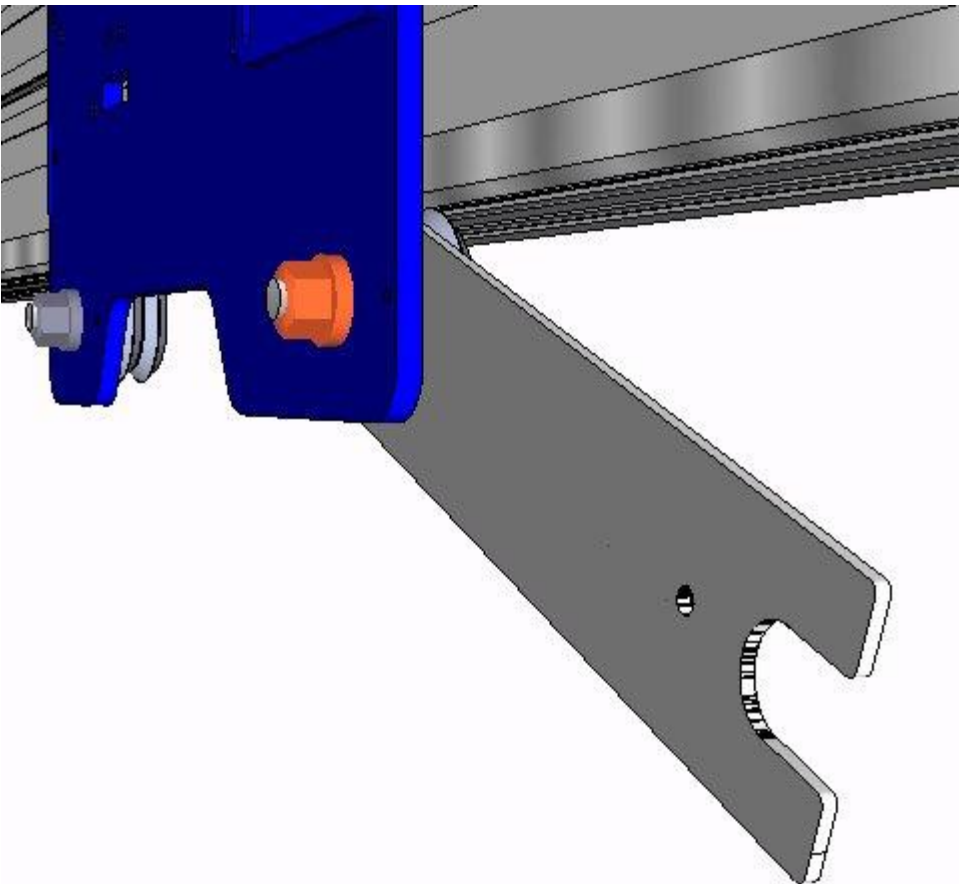
The lower wheels is adjusted tight by rotating its eccentric shaft. The shaft is off-center, when rotated it moves the wheel into and out of contact with the rail. A Red mark indicates the location of greatest opening between wheel and rail. The adjustment is done most easily with the flat bar wrench included with the machine.



Start with the Red mark at 12 o'clock Rotate the shaft in a clockwise direction in small increments until it fully engages the rail. Try to rock the YZ-Car back and forth from the front to make sure the wheel is tightly engaged and there is no wiggle, but do not over-tighten.



Check your adjustment over the entire rail. You should not be able to stop the wheel from turning with finger pressure. It can be tight enough to produce a slight amount of resistance to rolling. **Do not over tighten.**



When you have each wheel adjusted, hold the flat wrench while locking the wheel in position, tighten the nut securely.