

# ShopBot®

We make  
the tools  
for making the  
future.

## Project: Desk Chair

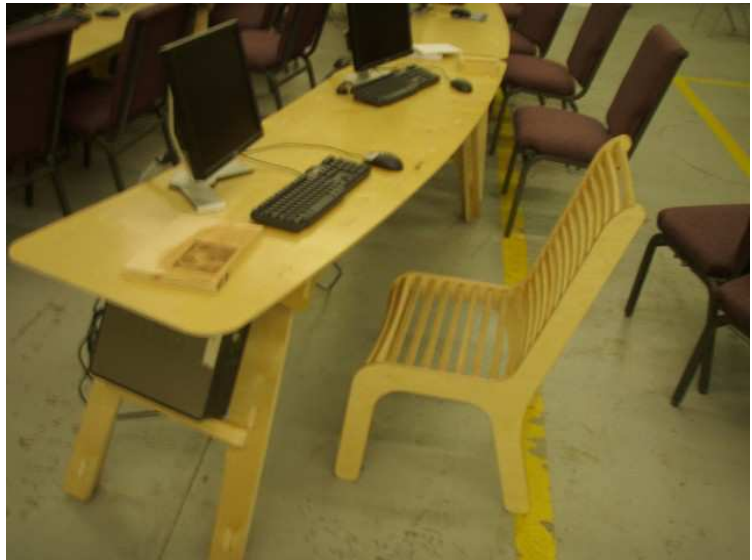
**Overview:** This chair not only has the eye appeal but the comfort appeal. Sit at your desk in style knowing you have a sleek, comfortable chair to sit on. Only two different size parts make up the entire project layout.

**Materials:** The included files were cut on furniture grade Baltic Birch plywood which measures .690 in thickness. Using a different thickness plywood will require adjustments in the file for the mortise thicknesses.

**Minimum Cutting Area:** 53" x 48"

**Bit Size:** 1/4"

**Finishing:** Spray or WipeOn Polyurathane



*\*\*Always read the entire project details before starting to cut the file yourself\*\**

*\*\*Account for the thickness of the physical material on hand and the material thickness in the file\*\**

*\*\*This file is zeroed to the tables surface, Zero your bit to the tables surface\*\**



Included with the cut file is a hold down toolpath that shows where it is safe to put screws. Run this file separately from the cut file so you can screw down the work piece, or if you have a different size board or different type of hold down disregard the file.



As the file starts cutting the profile of the parts make sure the cut is going all the way through the work piece and into the table surface. If you need to adjust any part of the file make sure you do not remove the hold down or you will loose position.



Tabs are use to hold all the pieces to the scrap wood attached to them. Use a utility knife to score these edges. Never try to push a piece out without cutting the tab, it will tear the grain on your project. Sand remaining tab flat.



1/8" roundover is needed on all edges for this project to fit together. If one does not want their project routed, the mortises will need to be modified with a dog bone.



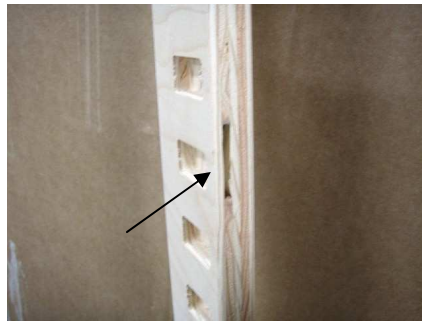
Place the pieces into the pockets on the chair sides. Notice the joints are hidden due to the routed edges.



Apply glue in the pockets and work your way down from the top of the chair to the seat. Make sure all of the curved sides are pointed towards the front of the project.



It can be useful to get a 3rd hand from an innocent bystander to help line up all of the slats into the pockets. Once this has been done clamp the project together and let the glue set up overnight.



This is a picture of a chair piece cut with non furniture grade plywood. The voids in the grain can be quite large and if positioned right they can weaken your chair. That is why a furniture grade plywood is recommended.



Give the entire project a good sanding job. Remember people will be sitting in the chair and using their hands to push themselves back upright. Nobody wants a splinter sitting in your chair.



If space is available use Minwax WipeOn Polyurethane to wipe a finish on all the parts before assembly. If not, glue the chair up and spray the entire project with a spray polyurethane.



Once the finish has dried, rub the surfaces down lightly with a 220 grit or higher sandpaper to smooth the finish back out.



Double check your chair glued up properly before putting to use. Cut a set, design a matching autumn, and enjoy.